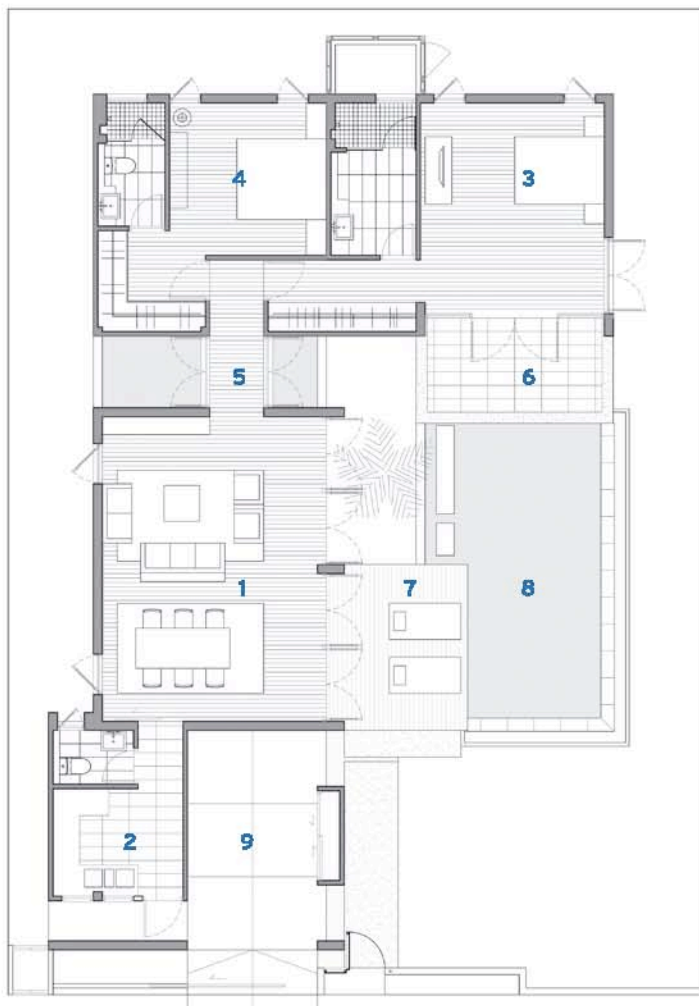




Pranarin

ปราณารินทร์

- ◆ 174 sq.m. total area
- ◆ 2 Bedrooms with en-suite bathroom
- ◆ Powder room
- ◆ Spacious solid timber decking
- ◆ Living & dining pavilion
- ◆ Built-in kitchen
- ◆ One-car parking
- ◆ Optional plunge pool



Ground Floor	
1 Living & Dining	35.00 sq.m.
2 Kitchen & Powder Room	12.00 sq.m.
3 Bedroom1 + wc.	35.50 sq.m.
4 Bedroom2 + wc.	24.00 sq.m.
5 Circulation	4.50 sq.m.
6 Terrace	9.00 sq.m.
7 Pool Deck	11.00 sq.m.
8 Swimming Pool 4x8	28.00 sq.m.
9 Parking	15.00 sq.m.
Total	174.00 sq.m.
Internal Area	111.00 sq.m.
External Area	35.00 sq.m.
Pool	28.00 sq.m.