

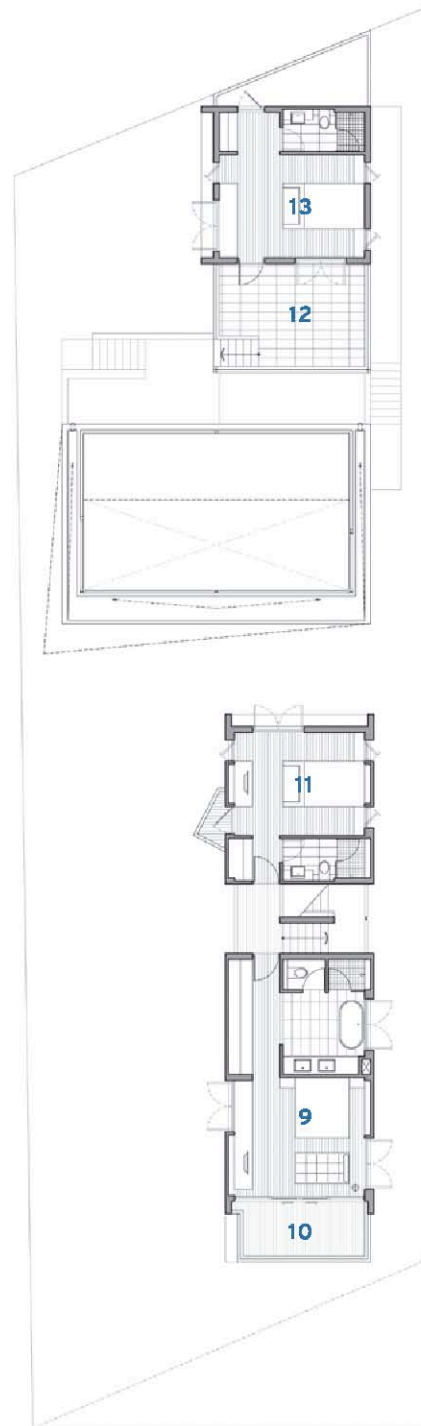


## Prananant ปราณานนท์

- ◆ Beachfront pool villa
- ◆ 680 sq.m. total area
- ◆ 4 Bedrooms with en-suite bathroom
- ◆ 15 meter lap pool
- ◆ Powder room
- ◆ Two oversized master bathroom with walk-in closet
- ◆ Spacious living & dining pavillion with eat-in-kitchen
- ◆ Large timber decking with ocean view
- ◆ Built-in closets for all bedroom
- ◆ Maid room
- ◆ Thai kitchen
- ◆ Two-car parking with motor court



<b>Ground Floor</b>	1 Living & Dining Pavilion	67.50 sq.m.
	2 Master Bedroom & wc.	49.50 sq.m.
	3 Terrace	78.00 sq.m.
	4 Pool	53.00 sq.m.
	5 Multi Purpose	25.00 sq.m.
	6 Service	51.00 sq.m.
	7 Circulation	46.00 sq.m.
	8 Pond & Landscape	186.00 sq.m.
	<b>Total</b>	<b>556.00 sq.m.</b>



<b>Second Floor</b>	9 Bedroom2 & wc.2	40.00 sq.m.
	10 Balcony	10.50 sq.m.
	11 Bedroom3 & wc.3	27.50 sq.m.
	12 Terrace	17.00 sq.m.
	13 Bedroom4 & wc.4	29.00 sq.m.
	<b>Total</b>	<b>124.00 sq.m.</b>

## Prananant ปราณานันท์

**Total Area 680.00 sq.m.**